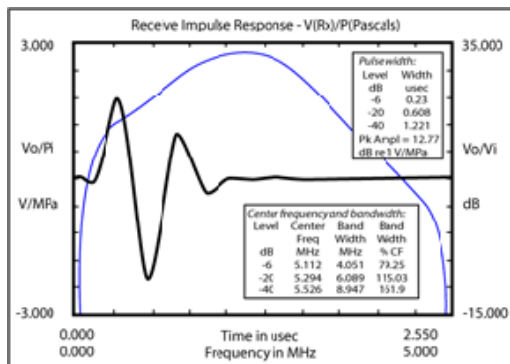


*"PiezoCAD® is an excellent tool
for rapid iterative transducer design
optimization"*



Versions Available:

3.05 Standard Version for Microsoft XP and Vista

3.06 Standard Version for Windows 7 only

4.01 Pro Version for XP, Vista and Windows 7

ABOUT SONIC CONCEPTS, INC.

PiezoCAD®, developed by George Keilman of Sonic Concepts, has been distributed for over 20 years and is currently in use in many companies, government laboratories, and businesses throughout the United States, Europe, and Asia.

Sonic Concepts, Inc. is also the manufacturer of ultrasonic transducers and systems and provides engineering consulting services and prototype development. Sonic Concepts' customers appreciate the high-quality products and personalized service.

Contact sales@sonicconcepts.com for pricing.



SONIC CONCEPTS, INC.

18804 North Creek Parkway
Suite 103
Bothell, WA 98011
USA
Phone (425) 485-2564
Fax (425) 485-7446

www.sonicconcepts.com

sales@sonicconcepts.com



PiezoCAD® 3.05
(Standard)

PiezoCAD® 3.06
(Standard for Windows 7 only)

PiezoCAD® PRO 4.01

Transducer

Modeling Software

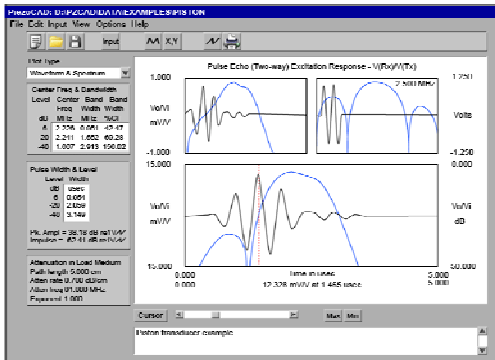
NEW PRO VERSION FEATURES:

- ◆ Complex Acoustic Load Impedances on the Front and Rear Ports
- ◆ Velocity Dispersion in each Piezoelectric and Acoustic layer on the Front and Rear
- ◆ Additional customized features for modeling are available upon request

ULTRASOUND ENGINEERING AND MANUFACTURING

HOW IT WORKS

PiezoCAD[®] uses a chain matrix technique to calculate the overall system characteristics from the electric terminals to the front acoustic port. The user can select piezoelectric material parameters from extensive piezoelectric database tables, including plate, beam, and bar mode elements in ceramic, crystalline, polymer and composite materials. The user can enter multiple acoustic matching and backing layers from acoustic database tables, as well as load medium characteristics. Thickness, velocity, attenuation, and cross-sectional area can be entered for each layer. **PiezoCAD[®]** and acoustic material database tables can be updated from within **PiezoCAD[®]** or edited directly using Microsoft Access.



MATCHING NETWORK

On the electrical port, the user can specify a matching network including any combination of series of shunt resistors, inductors, or capacitors, transformers, coaxial cable and multiple identical piezoelectric layers that are electrically connected in parallel. The user can enter any desired frequency range for the calculations, including calculating transducer response characteristics at higher harmonics.

OUTPUT

PiezoCAD[®] output includes a selection of acoustic and electric input imittance functions; transmit and receive power conversion efficiencies; transmit, receive, and pulse-echo transfer functions and time domain waveforms. All calculated results are given in MKS units and provide quantitative design performance. For example, transmit transfer functions are given in units of Pascals/Volt, where displayed function is the pressure in Pascals at the front face of the transducer per drive volt, versus frequency.

The user can quantitatively assess the transducer response to various transmitted voltage or received pressure waveforms. A tone burst excitation waveform can be specified within **PiezoCAD[®]**. Alternately, the excitation waveform can be loaded from an external data file that the user creates with their own software.

PULSE-ECHO CALCULATIONS

Pulse-echo calculations allow the user to view the round-trip response of a transducer, including optional attenuation in the load medium. A cursor function is available on all plots, allowing the user to read graphical values directly. The analytic envelope of the pulse is calculated using a Hilbert transform technique and displayed on all time domain waveforms. By clicking on any plot, the user can adjust the amplitude and frequency or time scales as desired.

Calculated results can be output to a file for later use in **PiezoCAD[®]**. The user can optionally output selected graphs to other Windows applications, and numerical data can be saved to a file that is compatible with popular spreadsheet programs.

“PiezoCAD[®] versions are compatible with personal computers running Microsoft XP, Vista, and Windows 7”

4.01 PRO NEW FEATURES

More Calculated Points:

16,000 in frequency domain

(vs. 2,000 in PiezoCAD standard version)

65,536 in time domain

(vs. 8,192 in PiezoCAD standard version)

New Velocity Dispersion:

- In piezoelectric material
- In faceplate or backplate layers
- May be selected (on or off), and a different function vs. frequency used in each layer
- User loads their own velocity vs. frequency function for each layer

New Complex Acoustic Loads:

- May be selected (real or complex) independently for front or rear acoustic loads
- User loads their own complex impedance (Re, Im) vs. frequency for front, rear

New Complex Electrical Matching Networks:

- A total of 7 new series and shunt networks may be selected, derived from equivalent circuit models found on HP/Agilent 4194A Impedance Analyzers

New Output Plots:

- Complex acoustic load vs. frequency on front and rear acoustic ports
- Velocity dispersion vs. frequency in piezoelectric, front, or rear layers